

Catalogue of products
2021



Welcome to the world of colours, quality, durability, welcome to **Colorit!**

In the year in which we celebrate 25 years of existence, we wanted to put together in one place all that we are, all that we were and all that we have become. Modest beginnings have led to what can be seen, in part, in this catalogue. Colorit was created on March 21, 1996 on the "International Day of Colours". We are proud of the fact that we are a family business in which new generations have been growing up and new families have been emerging. Continuous investing in market development, research and surveys, monitoring developments in the global industry and connecting with global manufacturers of the basic chemical industry has brought Colorit to the scale of a renowned, successful and recognizable brand. With modern production facilities covering 6000 m² of space, a laboratory equipped for monitoring and control of all production processes and EU standards and strong logistics and distribution network, Colorit products reach all parts of the country and abroad. Many schools, kindergartens, hospitals, institutions, residential buildings, commercial buildings,

private houses have Colorit facades, paints, adhesives for ceramics, parquet, waterproofing and other thermal insulation materials built in them. We have done many square meters, and the Colorit people, responsible work and dedicated management stand behind. Thanks to the constant increase in demand for our products, the Colorit company is confident about its future. With each new day, Colorit strives to achieve new results by strengthening its position in the international paint market.

We provide our customers with guarantees through certified and approved products in conformity with the highest EU standards.

- Quality Austria certificate ISO 9001:2015, Quality Management System
- Quality Austria certificate ISO 14001:2015, Environmental Management System
- CE marking for compliance of products with the requirements of European Directives
- ETICS thermal insulation systems ETAG 004: 2013, ETA-17/0013, ETA-17/0014

For 25 years we have believed in knowledge, in people, in quality, in investing in the team, in the confidence of clients, in progress based on work, efforts and dedication, and the fact that you are now reading this catalogue is a proof that our belief has made sense. There are people within our ranks who have been with us for 25 years already, but also those whose time is yet to come.

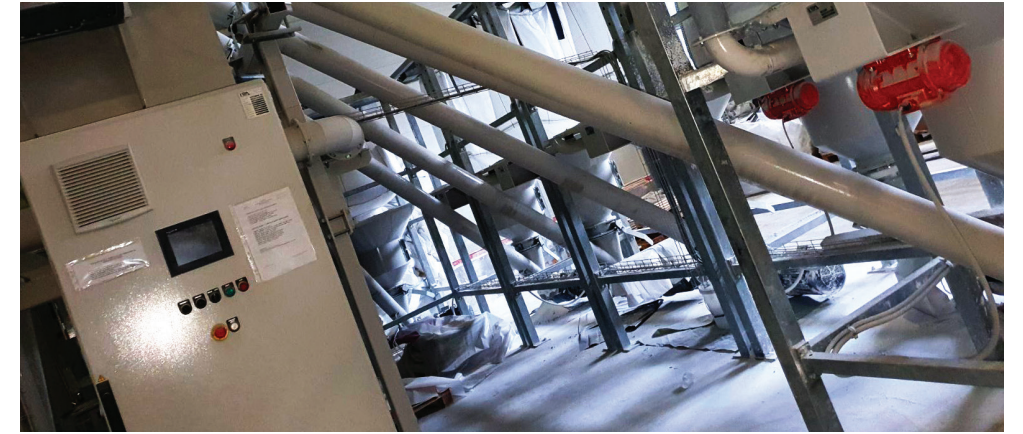
Welcome to our world. We hope for a long and successful cooperation based on mutual growth and confidence.

Your Colorit team!

Yesterday



Today









With you
today just like
tomorrow.

Content

Categories of Products	8
Facades	
Adhesives for facades	
Thermal facade systems	
Facade paints	
Interior paints	
Mix System	
Levelling and filling compounds	
Waterproofing	
Adhesives for ceramics and grouts	
Adhesives for parquet flooring and wood	
Primers	
Wood stains	
Portfolio	42
Generals Terms and Conditions	56

Key

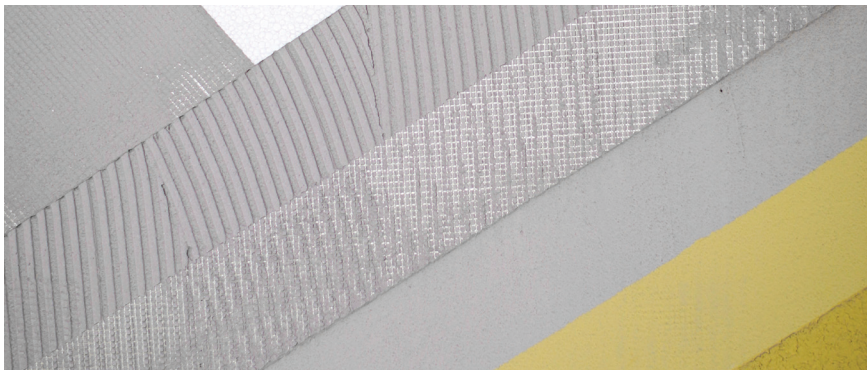
-  Advice, see the bottom
-  Mix system
-  Internal use
-  External use
-  Internal and external use
-  Certificate, compliant with ETAG 004



8
8
Facades



12
12
Adhesives for facades



14
14
Thermal facade systems



16
16
Facade paints



18
18
Interior paints



22
22
Mix system



23
23
Levelling and filling compounds



26
26
Waterproofing




30
30
Adhesives for ceramics and grouts



36
36
Adhesives for parquet flooring and wood



37
37
Primers and impregnations



40
40
Wood stains



FASSADE RM - V / Mineral-polymer facade

- Excellent whiteness
- High resistance
- Very easy to apply and workable
- High vapour permeability
- For internal and external use
- Decorative final appearance
- Number 1 choice of craftsmen

Extra white. RM-V is a one-component powder mass made on the basis of cement, lime, mineral fillers and additives. It is intended for decoration and protection of interior walls and ceilings. It can also be used for exterior walls where the building is relatively well protected from precipitation (wider entablature, etc.).

Consumption: Complete structure: grain 1 mm ≈ 1.8 kg/m²;
 grain 1.5 mm ≈ 2.3 kg/m²;
 grain 2 mm ≈ 2.8 kg/m²;
 Smoothed structure: grain 2 mm ≈ 2.3 kg/m²

Packaging: Bags of 25kg, 48 pcs, 1 pallet = 1200 kg



ETAG 004

FASSADE AKRIL / Acrylic facade

High resistance. Water-repellent. Used for surface protection and decoration of façade walls. Its properties include good adhesion, good water repellency and exceptional workability. It is weather-resistant and UV-radiation resistant. It is prepared for immediate use. Available in a number of shades in the Colorit mix scheme. It makes an integral part of the COLORIT THERM EPS and COLORIT THERM MW thermal facade systems according to ETAG 004 (ETA-17/0013 and ETA-17/0014).

Consumption: Complete structure: grain 1 mm ≈ 2 kg/m²;
 grain 1.5 mm ≈ 2.5 kg/m²;
 grain 2 mm ≈ 3 kg/m²

Smoothed structure: grain 2 mm ≈ 2.5 kg/m²

Packaging: Containers of 25 kg, 24 pcs, 1 pallet = 600 kg



ETAG 004

FASSADE SILIKAT / Silicate facade

Vapour permeable. Water-repellent. Intended for surface protection and decoration of facade walls. Its properties include strong adhesion, excellent vapour permeability and good water repellency. It is resistant to weathering and UV radiation. It is prepared for immediate use. Available in a number of shades from the Colorit Colour Card. It makes an integral part of the COLORIT THERM EPS and COLORIT THERM MW thermal facade systems according to ETAG 004 (ETA-17/0013 and ETA-17/0014).

Consumption: Complete structure: grain 1 mm ≈ 2 kg/m²;
 grain 1.5 mm ≈ 2.5 kg/m²;
 grain 2 mm ≈ 3 kg/m²

Smoothed structure: grain 2 mm ≈ 2.5 kg/m²

Packaging: Containers of 25 kg, 24 pcs, 1 pallet = 600 kg



FASSADE SILIKAT - SILIKON / Silicate-silicone facade

Vapour permeable. Exceptional water-repellency. Used for surface protection and decoration of façade walls. Its characteristics include strong adhesion, excellent vapour permeability and exceptional water repellency. It is weather-resistant and UV-radiation resistant. It is prepared for immediate use. Available in a number of shades in the Colorit Colour Card.

Consumption: Complete structure: grain 1 mm ≈ 2 kg/m²;
 grain 1.5 mm ≈ 2.5 kg/m²;
 grain 2 mm ≈ 3 kg/m²

Smoothed structure: grain 2 mm ≈ 2.5 kg/m²

Packaging: Containers of 25 kg, 24 pcs, 1 pallet = 600 kg



ETAG 004

FASSADE SILIKON / Silicone facade

Supreme water-repellency. Vapour permeable. Flexible. Used for surface protection and decoration of façade walls. Its characteristics include good adhesion, excellent water repellency, good vapour permeability and exceptional workability. It is resistant to weathering and UV radiation. Ready to use. Available in a number of shades in the Colorit mix scheme. It makes an integral part of the COLORIT THERM EPS and COLORIT THERM MW thermal façade systems according to ETAG 004 (ETA-17/0013 and ETA-17/0014).

Consumption: Complete structure: grain 1 mm ≈ 2 kg/m²;
 grain 1.5 mm ≈ 2.5 kg/m²;
 grain 2 mm ≈ 3 kg/m²

Smoothed structure: grain 2 mm ≈ 2.5 kg/m²

Packaging: Containers of 25 kg, 24 pcs, 1 pallet = 600 kg



*FASSADE SILIKON - the best choice for thermal insulation systems, COLORIT THERM



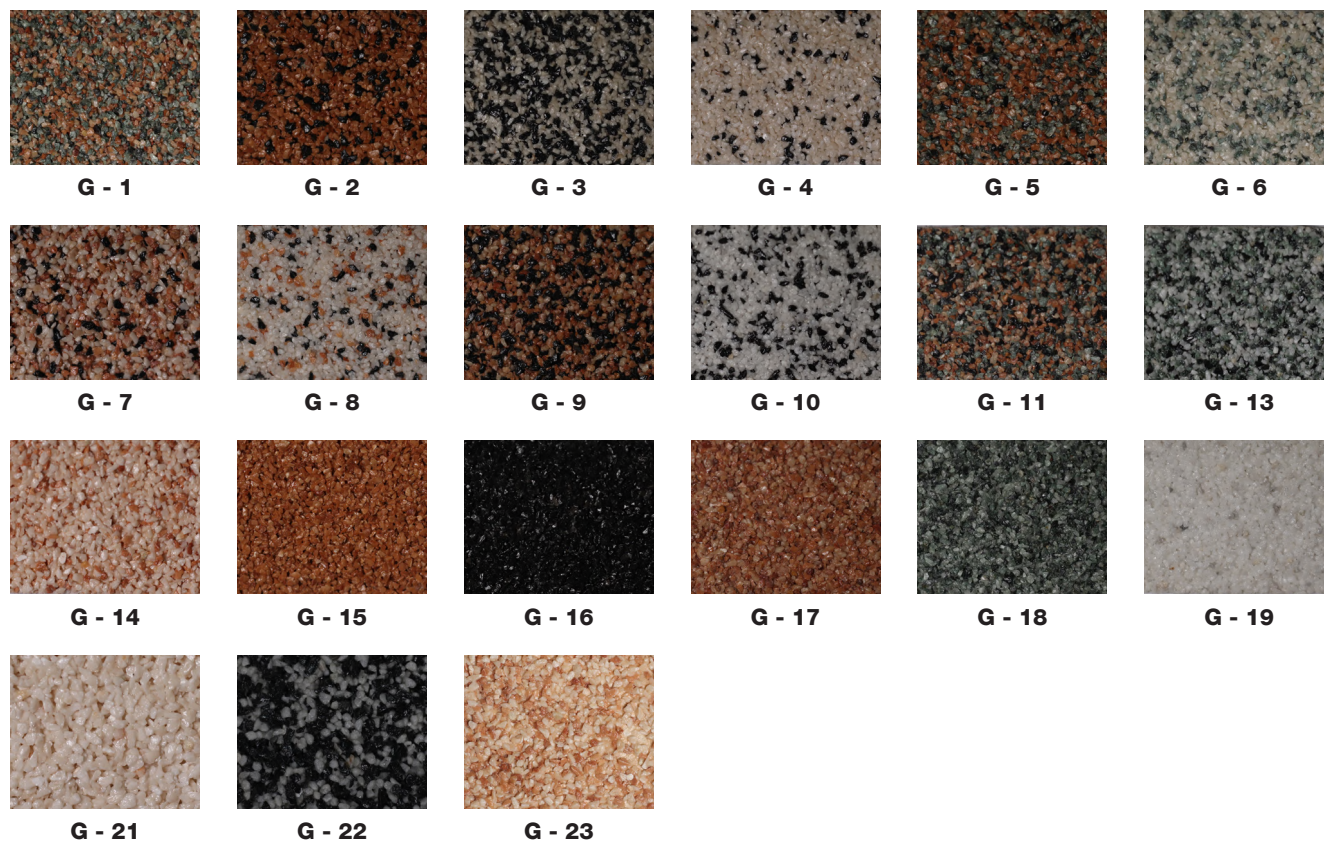
GRANITPLAST / Granite decorative facade

Exceptional wear resistance. Excellent adhesion. Granite decorative facade for the protection of vertical walls on the foundations of buildings, sub-walls, garages, corridors, staircases and all surfaces that are exposed to heavy loads. Easy to maintain. Natural origin of the grain ensures its exceptional UV stability.

Consumption: Grain 1.2 mm \approx 3.5 kg/m²
Grain 1.8 mm \approx 4.5 kg/m²

Packaging: Containers of 15 kg, 33pcs, 1 pallet = 495 kg
Containers of 25 kg, 24 pcs, 1 pallet = 600 kg

The colours that are shown are for reference only.
Due to printing-technical reasons, deviations from the original are possible.



KRISTALIT / Decorative transparent coating

Kristalit is a decorative weather-resistant finishing coat. It produces an additional glittering silvery effect. Material is ready-to-use. It is suitable as a finishing coat on: acrylic, silicate, silicate-silicone and silicone facades.

Consumption: 1 kg \approx 5-8 m² for single-layer coating, depending on the substrate absorption and roughness.

Packaging: Containers of 1 kg
Containers of 5 kg



Adhesives for facades



EPS-FIX / Adhesive for styrofoam

Excellent resistance. One-component powdery compound based on mineral fillers, cement, polymeric binders and necessary additives. It is used as glue for styrofoam on substrates made of: clay, concrete, gas concrete, cement and cement-lime mortars. It makes an integral part of the COLORIT THERM EPS thermal facade system according to ETAG 004 (ETA-17/0013).

Consumption: $\approx 4.5 - 5.5 \text{ kg/m}^2$

Packaging: Bags of 25 kg, 48 pcs, 1 pallet = 1200 kg



STIROFIX / Universal adhesive for styrofoam

Universal. One-component powdery compound based on mineral fillers, cement, polymeric binders and necessary additives. It is used as glue for styrofoam on substrates made of: clay, concrete, cement and cement-lime mortars, and serves, also, for the installation of reinforcing mesh on styrofoam in thermal facade systems. It makes an integral part of the COLORIT THERM EPS thermal facade system according to ETAG 004 (ETA-17/0013).

Consumption: Gluing $\approx 4.5 - 5.5 \text{ kg/m}^2$

Installation of reinforcing mesh $\approx 4-5 \text{ kg/m}^2$

Packaging: Bags of 25 kg, 48 pcs, 1 pallet = 1200 kg



STIROFIX BIJELI / Universal adhesive for styrofoam

White. Universal. One-component powdery compound based on mineral fillers, cement, polymeric binders and necessary additives. It is used as glue for styrofoam on substrates made of: clay, concrete, cement and cement-lime mortars, and serves, also, for the installation of reinforcing mesh on styrofoam in thermal facade systems.

Consumption: Gluing $\approx 4.5 - 5.5 \text{ kg/m}^2$

Installation of reinforcing mesh $\approx 4-5 \text{ kg/m}^2$

Packaging: Bags of 25 kg, 48 pcs, 1 pallet = 1200 kg



STIROFIX PLUS / Fibre-reinforced universal adhesive for styrofoam

Fibre-reinforced. One-component powdery compound based on mineral fillers, cement, polymeric binders, additives. Grain size 1.3 mm, additionally fibre-reinforced. It is used as glue for styrofoam on substrates made of: clay, concrete, gas concrete, cement and cement-lime mortars, and serves, also, for the installation of reinforcing mesh on styrofoam in thermal facade systems.

Consumption: Gluing $\approx 4.5 - 5.5 \text{ kg/m}^2$

Installation of reinforcing mesh $\approx 4 - 5 \text{ kg/m}^2$

Packaging: Bags of 25 kg, 48 pcs, 1 pallet = 1.200 kg



UNIFIX / Flexible adhesive for styrofoam, styrodur and mineral wool

- **Universal use for all types of waterproofing (MW, EPS, XPS)**
- **Easy to install and workable**
- **Very low water absorption**
- **Resistant to impact, extreme pressure resistance**
- **Due to its high elasticity, it is the best choice in the installation of COLORIT THERM thermal facade systems**

One-component powdery compound based on mineral fillers, cement, polymeric binders and necessary additives. It is used as glue for mineral wool, styrodur, styrofoam and serves, also, for the installation of reinforcement mesh on above-mentioned thermal-insulation materials. Exceptional bonding power on different substrates. It makes an integral part of the COLORIT THERM MW thermal facade system according to ETAG 004 (ETA-17/0014).

Consumption: EPS gluing $\approx 4.5 - 5.5 \text{ kg/m}^2$

Installation of reinforcing mesh $\approx 4 - 5 \text{ kg/m}^2$

MW gluing $\approx 5 - 7 \text{ kg/m}^2$

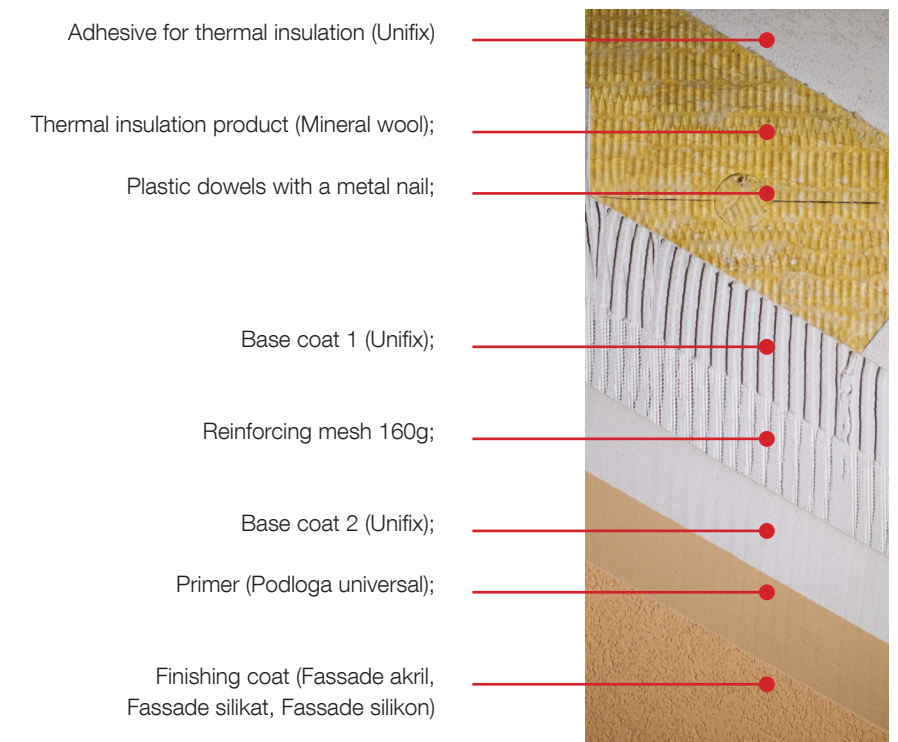
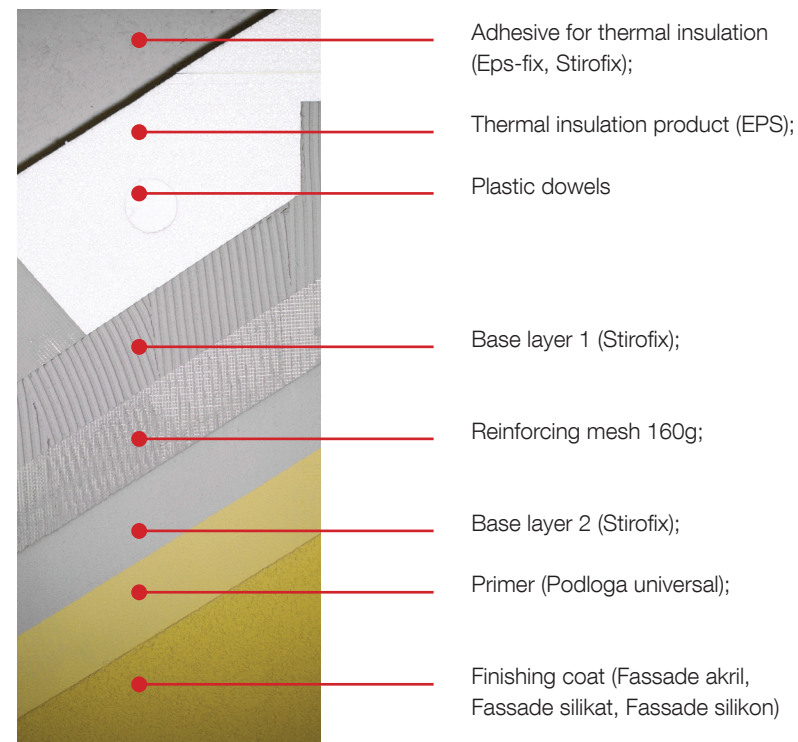
Installation of reinforcing mesh $\approx 5 - 7 \text{ kg/m}^2$

Packaging: Bags of 25 kg, 48 pcs, 1 pallet = 1.200 kg



Whether a building is being constructed or renovated, the thermal facade system is a crucial element for all those wishing to achieve significant savings in thermal energy, reduce future overhead costs and ensure the best long-term functionality of the building.

COLORIT THERM facade system enables better sound and thermal insulation of the building, increases mechanical resistance but also guarantees the desired aesthetics of the building. The mutual compliance of all elements of the system with international standards guarantees a healthy and pleasant microclimate inside the building, achieving not only the maximum protection but also durability.



Characteristics:

- Additional sound protection
- Higher energy efficiency
- Multi-year warranty for the facade system
- More comfortable space
- Resistance to different weather conditions
- High degree of water repellency and mechanical resistance
- Wide range of light-stable tones of extraordinary fastness and beauty



Characteristics:

- Reduced energy consumption
- Reduced CO2 emission
- High thermal protection
- Additional sound protection
- Mechanical protection and extension of the building's lifetime
- Colorit Therm MW provides additional safety in case of fire
- Healthy and pleasant microclimate

Facade paints



UNIFAS AKRIL / Acrylic facade paint

Durable. UV stable. Water-repellent. Dispersive façade paint designed for painting and surface protection of exterior walls on residential, industrial, sports and other buildings. Good adhesion to substrates, durable in variable weather conditions, vapour-permeable and resistant to UV rays. Ecological paint – very low content of volatile organic compounds. Available in a number of shades in the Colorit mix scheme.

Consumption: 1 l ≈ 4 - 5 m² for double-layer coat,
depending on surface absorption and roughness

Packaging: Containers of 2 l, 120 pcs, 1 pallet = 240 l
Containers of 5 l, 60 pcs, 1 pallet = 300 l
Containers of 15 l, 24 pcs, 1 pallet = 360 l



UNIFAS SILIKAT / Silicate facade paint

Durable. UV stable. Vapour permeable. Silicate facade paint designed for painting and surface protection of exterior walls on residential, industrial, sports and other buildings. Good adhesion to substrates, durable in variable weather conditions, vapour-permeable and resistant to UV rays. Ecological paint – very low content of volatile organic compounds. Available in a number of shades in the Colorit mix scheme.

Consumption: 1 l ≈ 4 - 5 m² for double-layer coat,
depending on surface absorption and roughness

Packaging: Containers of 2 l, 120 pcs, 1 pallet = 240 l
Containers of 5 l, 60 pcs, 1 pallet = 300 l
Containers of 15 l, 24 pcs, 1 pallet = 360 l



UNIFAS SILIKON / Silicone facade paint

Durable. UV stable. Flexible. Exceptional water repellency. Silicone facade paint designed for painting and surface protection of exterior walls on residential, industrial, sports and other buildings. Good adhesion to substrates, durable in variable weather conditions, vapour-permeable and resistant to UV rays. Ecological paint – very low content of volatile organic compounds. Available in a number of shades in the Colorit mix scheme.

Consumption: 1 l ≈ 4 - 5 m² for double-layer coat,
depending on surface absorption and roughness

Packaging: Containers of 2 l, 120 pcs, 1 pallet = 240 l
Containers of 5 l, 60 pcs, 1 pallet = 300 l
Containers of 15 l, 24 pcs, 1 pallet = 360 l



AKRONAL / Concrete paint

- Product designed for both professionals and creative persons
- Aside from excellent protection of concrete surfaces, it is perfect for painting walls, murals, decorating concrete products, etc.
- Durable in all weather conditions.
- Excellent coverage
- Comes in 10 basic, UV stable colours
- Excellent adhesion to the substrate
- Long-term protection
- Eco-friendly, vapour-permeable paint



UV stable. Vapour permeable. Akronal is dispersive paint intended for painting and surface protection of vertical exterior concrete surfaces, just like other cement-bound façade surfaces. Good adhesion to substrates, durable in variable weather conditions, vapour-permeable and resistant to UV rays. Ecological paint – very low content of volatile organic compounds. Colours: white, yellow, ochre, red, oxide red, green, blue, brown, grey, black. Other colours according to customers' wishes from the Colorit Colour Card (over 500 colours) for a minimum quantity of 200 kg.

Consumption: 1 kg ≈ 2.5 – 3.5 m² for double-layer coating
Packaging: Containers of 1 kg, 6 pcs, 1 box = 6 kg
Containers of 5 kg, 60 pcs, 1 pallet = 300 kg
Containers of 25 kg, 24 pcs, 1 pallet = 600 kg





MOLERIN PRAKTIK / Interior paint

Excellent for refreshing walls. Water-dilutable paint for interior walls. Matt finishing coat. Good whiteness. Good covering power. Good vapour permeability. Easy to use. Resistant to dry cleaning. Ecological paint – very low content of volatile organic compounds.

Consumption: 1 kg = 2-3m2 for double-layer coating

Packaging: Containers of 3 kg, 120 pcs, 1 pallet = 360kg
 Containers of 8 kg, 60 pcs, 1 pallet = 480 kg
 Containers of 15 kg, 33 pcs, 1 pallet = 495 kg
 Containers of 25 kg, 24 pcs, 1 pallet = 600 kg



MOLERIN CLASSIC / Interior paint

- New generation of Molerin Classic with enhanced coverage and adjustability for professionals
- Thanks to its modern formula, Molerin Classic is applied easily and leaves nothing but a clean trace
- Turn an ordinary room into a modern one with a little effort, from pure white to one of 5000 shades
- Harmony of intensive whiteness and coverage

Water-dilutable paint for interior walls. Matt finishing coat. Good covering power. Good vapour permeability. Easy to use. Resistant to dry cleaning. Ecological paint – very low content of volatile organic compounds. Available in a number of shades in the Colorit mix scheme.

Consumption: 1 kg = 3-3.5m2 for double-layer coating

Packaging: Containers of 3 kg, 120 pcs, 1 pallet = 360 kg
 Containers of 8 kg, 60 pcs, 1 pallet = 480 kg
 Containers of 15 kg, 33 pcs, 1 pallet = 495 kg
 Containers of 25 kg, 24 pcs, 1 pallet = 600 kg



Mix system



MIX CENTAR COLORIT provides unlimited solutions at the request of customers by colours and facades.

It eliminates time loss in the supply chain, speeds up the production of the precisely desired colours in the most practical way!



Levelling and filling compounds



GLET C / Skimming compound for interior walls

Exceptional workability. White powdery compound based on lime, mineral fillers and additives. Designed for fine levelling of interior walls. EN 998-1-GP CSII WO skimming compound for general use.

Consumption: $\approx 1.5 - 2 \text{ kg/m}^2$ depending on the wall quality

Consumption: $\approx 1.5 - 2 \text{ kg/m}^2$ depending on the wall quality

Packaging: Bags of 4 kg, 226 pcs, 1 pallet = 904 kg

Bags of 20 kg, 42 pcs, 1 pallet = 840 kg



GLET F / Skimming compound

Exceptional resistance. White powdery compound based on white cement, mineral fillers and additives. Designed for fine levelling of interior and exterior walls. EN 998-1-GP CSII WO skimming compound for general use.

Consumption: $\approx 1.5 - 2 \text{ kg/m}^2$ depending on the wall quality

Packaging: Bags of 4 kg, 226 pcs, 1 pallet = 904 kg

Bags of 20 kg, 42 pcs, 1 pallet = 840 kg



GLET P / Dispersive skimming compound

Ready-to-use compound. Ready-to-use dispersive compound used for fine levelling of interior walls. Its properties include easy use, exceptional workability and good adhesion. GLET P is easy to polish, which enables producing of smooth surfaces.

Consumption: $\approx 1.5 - 2 \text{ kg/m}^2$ for two-layer coating depending on the wall quality

Packaging: Containers of 2 kg, 6 pcs, 1 box = 12 kg

Containers of 4 kg, 120 pcs, 1 pallet = 480 kg

Containers of 25 kg, 24 pcs, 1 pallet = 600 kg





R - KIT / Repair filler

R-KIT is a compound based on plaster, filler and additives. It is intended for rough levelling of major uneven surfaces on interior walls of up to 3 mm in thickness. Suitable for electricians.

Consumption: ≈ 1 kg/m² for a 1-mm-thick coating

Packaging: Containers of 2 kg, 120 pcs, 1 pallet = 240 kg



CKM / Cement-lime mortar

Good mechanical resistance. Easy workability. Cement-lime mortar with grain of up to 1.2mm. It is applied for manual and machine plastering of interior walls and ceilings made of clay, concrete, siporex and similar. Optimal application thickness 10 - 20 mm.

Consumption: ≈ 14 kg/m² for a 10-mm-thick coating

Packaging: Bags of 25 kg, 48 pcs, 1 pallet = 1200 kg



PODOLIT D5 / Self-levelling compound for floor levelling 1-5 mm

Self-levelling. Compound for levelling interior concrete substrates before the laying of parquet, ceramics, textile and PVC floorings. Allowed application thickness is 1-5 mm. EN 13813 CT-C25-F6 cement compound for floor levelling.

Consumption: ≈ 1.2 kg/m² for a 1-mm-thick coating

Packaging: Bags of 25 kg, 48 pcs, 1 pallet = 1200 kg



PODOLIT D30 / Self-levelling compound for floor levelling 4-30 mm

Self-levelling. Compound for levelling interior concrete substrates before the laying of parquet flooring, ceramics, textile and PVC floorings. Allowed application thickness is 4-30 mm. EN 13813 CT-C20-F4 cement compound for floor levelling.

Consumption: ≈ 1.2 kg/m² for a 1-mm-thick coating

Packaging: Bags of 25 kg, 48 pcs, 1 pallet = 1200 kg



GIPSOFIX / Adhesive for plasterboards

Excellent adhesion. GIPSOFIX is a powdery compound based on plaster, mineral fillers and additives. It is intended for gluing plasterboards to vertical walls and concrete surfaces in indoor exploitation conditions.

Consumption: ≈ 4 - 5 kg/m² depending on the wall quality

Packaging: Bags of 20 kg, 42 pcs, 1 pallet = 840 kg



KVARCNI PIJESAK / 0,1 - 0,7 mm

Pure quartz sand. Quartz sand of pale grey colour, regular gradation curve and excellent flowability. It is used for grouting of floors made of floorboards, rehabilitation and maintenance of playgrounds for children and sports grounds and for fine sandblasting of metals.

Packaging: Bags of 25 kg, 48 pcs, 1 pallet = 1200 kg



FERBETON C / Quartz sprinkle for industrial floors

Increases the durability of moderately loaded industrial floors. The installation of FERBETON C provides excellent resistance to wear, slipping, impact, reduced water absorption as well as an aesthetically beautiful surface that lasts a long time. It is used in places where heavy loads are expected, such as warehouses, hangars, workshops, garages, basements, parking lots, etc. One-component, grey sprinkle with the addition of a specially selected quartz aggregate and additive. When applied and installed using the "dry on fresh" system and with finishing using rotary trowels ("helicopters"), a wear-resistant floor surface is obtained after the recommended phase of maintenance and drying.

Consumption: ≈ 5 kg/m²

Packaging: Bags of 25 kg, 48 pcs, 1 pallet = 1200 kg



Waterproofing



HIDROFOB / Cement waterproofing compound

Protection against moisture penetration. It is used for waterproofing of damp walls, basement rooms, concrete walls, subwalls and similar facilities where protection against moisture is needed. At critical points (corners, wall and floor joints and similar) auxiliary HIDROFOB elements should be used. Not recommended for use at places with permanent hydrostatic water pressure. EN 14891-CM cement water-impermeable product.

Consumption: ≈ 4 - 6 kg/m² for two to three coats

Packaging: Containers of 5 kg, 60 pcs, 1 pallet = 300 kg
Bags of 25 kg, 48 pcs, 1 pallet = 1200 kg



HIDROFOB DA 194 / One-component elastic waterproofing coating

Ready-to-use. High elasticity. One-component waterproofing coating for indoor use. It is used for waterproofing bathrooms, shower cabins, kitchens and similar before the laying of ceramics. At critical points (corners, wall and floor joints and similar) auxiliary HIDROFOB elements should be used.

Consumption: ≈ 1 kg/m² for two coats

Packaging: Containers of 5 kg, 60 pcs, 1 pallet = 300 kg



HIDROFOB ELASTIC 1K / One-component elastic polymer-cement waterproofing compound

Exceptional water-repellency. Good elasticity. Excellent adhesion. Used for waterproofing of balconies, bathrooms, technical water reservoirs and similar, before their coating with ceramics. Hidrofob elastic 1K is water impermeable with positive and negative water pressure of up to 1.5 bars. It is designed for internal and external use, before laying of ceramics. At critical points (corners, wall and floor joints and similar) auxiliary HIDROFOB elements should be used. EN 14 891 CM 01 cement water-impermeable product with improved crack-bridging at low temperature (-5°C).

Consumption: ≈ 3-4 kg/m² for two coats

Packaging: Bags of 20 kg, 48 pcs, 1 pallet = 960 kg



HIDROFOB ELASTIC 2K / Two-component elastic polymer-cement waterproofing compound

- Guarantees high elasticity and water repellency under standard EN 14891 CM 01
- The best choice for demanding areas such as balconies, terraces, bathrooms, swimming pools, drinking water tanks
- Protection against positive and negative water pressure
- Provides long-term waterproofing with just two coats in combination with HIDROFOB elements
- Easy to apply with a brush or trowel

Exceptional water-repellency. High elasticity excellent adhesion. Used for waterproofing of balconies, bathrooms, potable water reservoirs and similar, before their coating with ceramics. Hidrofob elastic 2K is waterproof with positive and negative water pressure of up to 1.5 bars. It is designed for internal and external use, before laying of ceramics in combination with Hidrofob elastic tape. EN 14891 CM 01 cement waterproof product with improved crackbridging at low (-5°C).

Consumption: ≈ 3-5kg/m² for two coats

Packaging: Small set = 7 kg ("A" 5.25 kg + "B" 1.75 kg)
Big set = 28 kg ("A" 21 kg + "B" 7 kg)

Waterproofing- hidden, but important!

1. HIDROFOB ELASTIC 2k first coat
2. HIDROFOB COLLARS
3. HIDROFOB ELASTIC TAPE
4. HIDROFOB ELASTIC 2k second coat
5. PRO-FLEX S1
6. KERAFUG-C

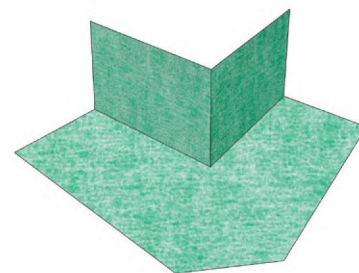




HIDROFOB EXTERNAL ANGLE / Permanently elastic angle element

Permanently elastic angle element for sealing joints on external corners. Intended for indoor and outdoor application. Resistant to the effects of alkalis and other chemical substances.

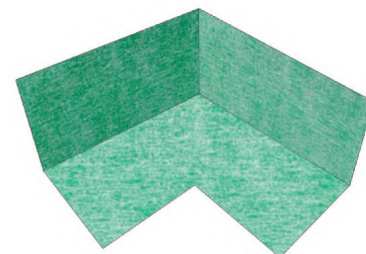
Packaging: Piece



HIDROFOB INTERNAL ANGLE / Permanently elastic angle element

Permanently elastic angle element for sealing joints on internal corners. Intended for indoor and outdoor application. Resistant to the effects of alkalis and other chemical substances.

Packaging: Piece



HIDROFOB ELASTIC TAPE / Permanently elastic sealing tape

Used for sealing expansion joints in bathrooms, on balconies, terraces, pools in combination with Hidrofob elastic 2K. Hidrofob elastic 1K and Hidrofob DA 194. Waterproof, elastic, crack bridging. Resistant to the effects of alkalis, acids and salts...

Packaging: 1 box, 10m
Roll, 50m



HIDROFOB ELASTIC TAPE PLUS / Permanently elastic sealing tape

It is installed between the edges of the shower cabin or bathtub and the wall in combination with Hidrofob elastic 2K, Hidrofob elastic 1K, Hidrofob DA 194, before the installation of ceramic or stone tiles. This tape ensures waterproofness of the joint in case of cracks occurring on the silicon that is used most frequently for sealing joints. Resistant to the effects of alkalis, acids and salts.

Packaging: 1 box, 25m



HIDROFOB ELASTIC TAPE HTE 100 / Self-adhesive permanently elastic sealing tape

Self-adhesive. Easy to use. Excellent temperature stability and watertightness. Polypropylene fabric covered with rubber allows great elasticity at lower and higher temperatures. Tape resistant to alkali, salt and certain acids. It is used in waterproofing systems with products HIDROFOB ELASTIC 2K, HIDROFOB ELASTIC 1K, HIDROFOB DA 194. Before installing ceramic or stone tiles, expansion joints in bathrooms, on balconies, terraces, facade joints with carpentry. For a quality joint between the floor and the wall in damp rooms.

Packaging: 1 box, 20 m

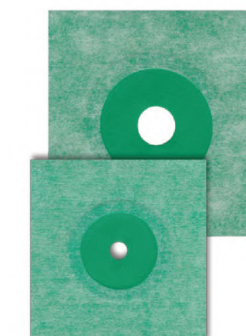


HIDROFOB COLLARS

Collars for easier and better-quality sealing of openings around installation connections and outlets. Intended for indoor and outdoor application. Resistant to the effects of alkalis and other chemical substances.

Dimensions: Ø 12 - 50mm
Ø 25 - 75 mm
Ø 75 - 115mm

Packaging: Piece



Adhesives for ceramics and grouts



KERAFIX Z / Adhesive for interior ceramic tiles C1T

Standard adhesive for interior use. Construction adhesive for gluing wall and floor ceramic tiles in indoor exploitation conditions. Made on the basis of cement, mineral fillers and additives. EN 12004-C1T standard cement -based adhesive with reduced slip.

Consumption: ≈ 3 - 5 kg/m²

Packaging: Bags of 5 kg, 200 pcs, 1 pallet = 1000 kg
Bags of 25 kg, 48 pcs, 1 pallet = 1200 kg



KERAFIX P / Adhesive for exterior ceramic tiles C2TE

For exterior use. Construction adhesive for gluing wall and floor tiles in indoor and outdoor exploitation conditions. Made on the basis of cement, mineral fillers and additives. EN 12004-C2TE improved flexible cement -based adhesive with reduced slip and prolonged pot life.

Consumption: ≈ 3 - 5 kg/m²

Packaging: Bags of 5 kg, 200 pcs, 1 pallet = 1000 kg
Bags of 25 kg, 48 pcs, 1 pallet = 1200 kg



KERAFIX WHITE / White adhesive for ceramic tiles C2TE

White adhesive for ceramic tiles. s. White construction glue, for gluing wall and floor ceramic tiles, marble, granite etc. For external and internal exploitation conditions. It is especially suitable for bonding natural stone that is sensitive to discoloration, transparent ceramics, etc. EN12004-C2TE- Improved cementitious adhesive with extended open time and reduced slip.

Consumption: ≈ 3-5 kg/m²

Packaging: Bags of 25 kg, 48 pcs, 1 pallet = 1200 kg



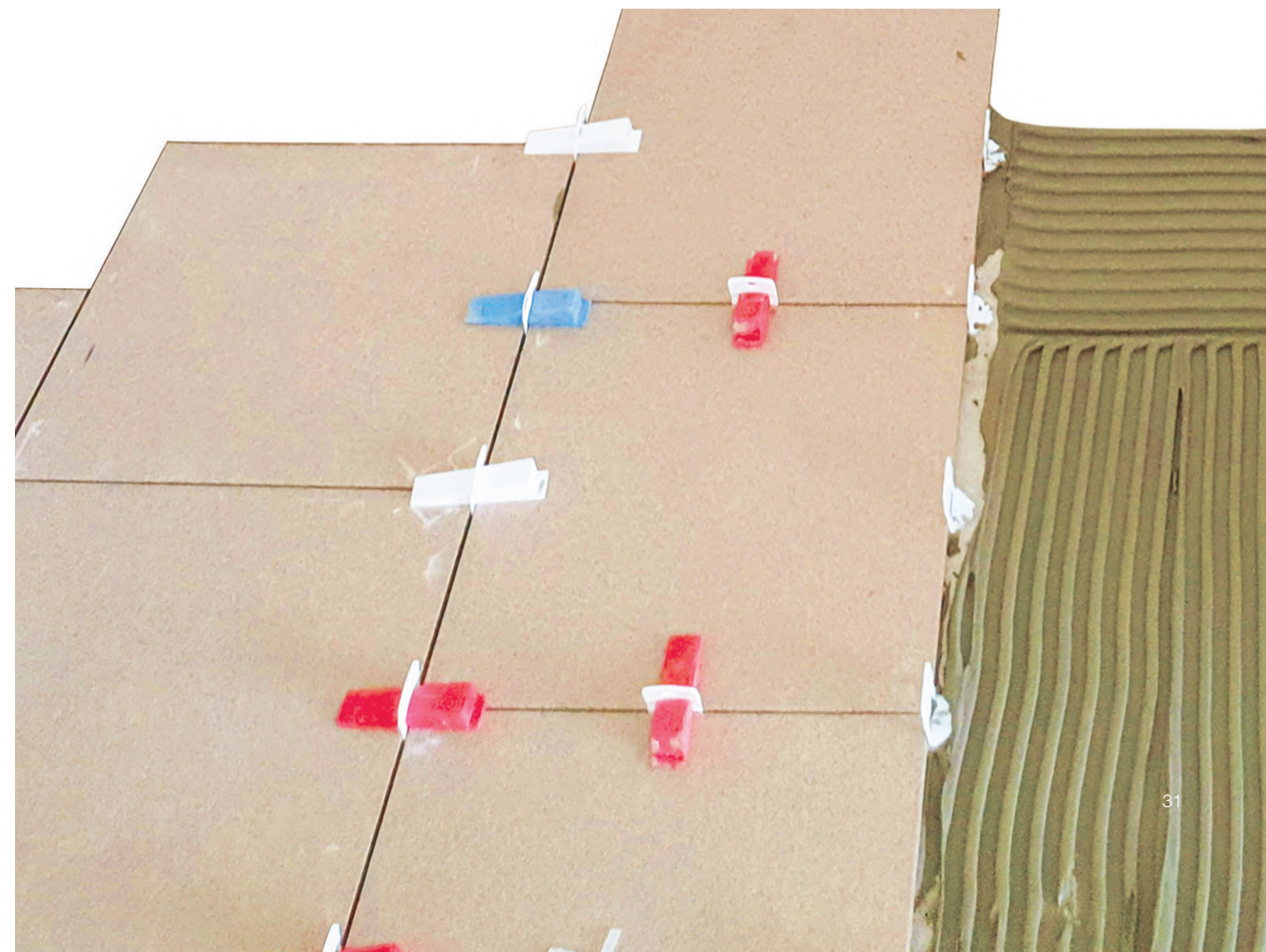
PRO-FLEX S1 / Flexible adhesive for ceramic tiles C2TES1

- High resistance for busy surfaces
- Moisture resistance
- Extended shelf life
- Excellent workability
- C2TES1 STANDARD - a guarantee of high flexibility
- Application when installing underfloor heating systems
- Solution needed for "tile to tile" gluing
- For positions where higher temperature oscillations or mechanical loads are expected

Flexible. Good-quality construction adhesive designed for gluing ceramic and stone tiles in indoor and outdoor exploitation conditions, as well as for the laying of ceramics on underfloor heating. Made on the basis of cement, mineral fillers and additives. EN 12004-C2TES1 improved flexible cement -based adhesive with reduced slip and prolonged pot life.

Consumption: ≈ 3 - 5 kg/m²

Packaging: Bags of 5 kg, 200 pcs, 1 pallet = 1000 kg
Bags of 25 kg, 48 pcs, 1 pallet = 1200 kg





KERAFUG C / Grouting compound

- High wear resistance
- Excellent water repellency
- For grouting underfloor heating surfaces
- Prolonged resistance to algae and fungi
- Easy to install

Grout for wall and floor ceramic tiles, mosaic tiles, gres tiles, stone tiles, etc. For joints up to 8 mm wide, in indoor and outdoor exploitation conditions. Due to its characteristics, it is used for grouting terraces, balconies, bathrooms, shower cabins, underfloor heating surfaces, etc. Available in 18 shades, adapted to the newer design in architecture.

Consumption: ≈ 0.5 – 0.7 kg/m², depending on the width of the joints and the dimensions of the tiles

Packaging: Containers of 2 kg, 120 pcs, 1 pallet = 240kg

The colours that are shown are for reference only.
Due to printing-technical reasons, deviations from the original are possible.

Colour card



MRAMORFIX / White flexible adhesive C2TES1

High resistance. Water repellent. Quality white construction adhesive intended for gluing marble, granite, stone, ceramic tiles, etc. in outdoor and indoor conditions of exploitation. It is made on the basis of white cement, mineral fillers and additives. EN 12004-C2TES1 improved flexible cementitious adhesive with reduced slip and extended shelf life.

Consumption: ≈ 3 - 5 kg/m²

Packaging: Bags of 5 kg, 200 pcs, 1 pallet = 1000 kg
Bags of 25 kg, 48 pcs, 1 pallet = 1200 kg



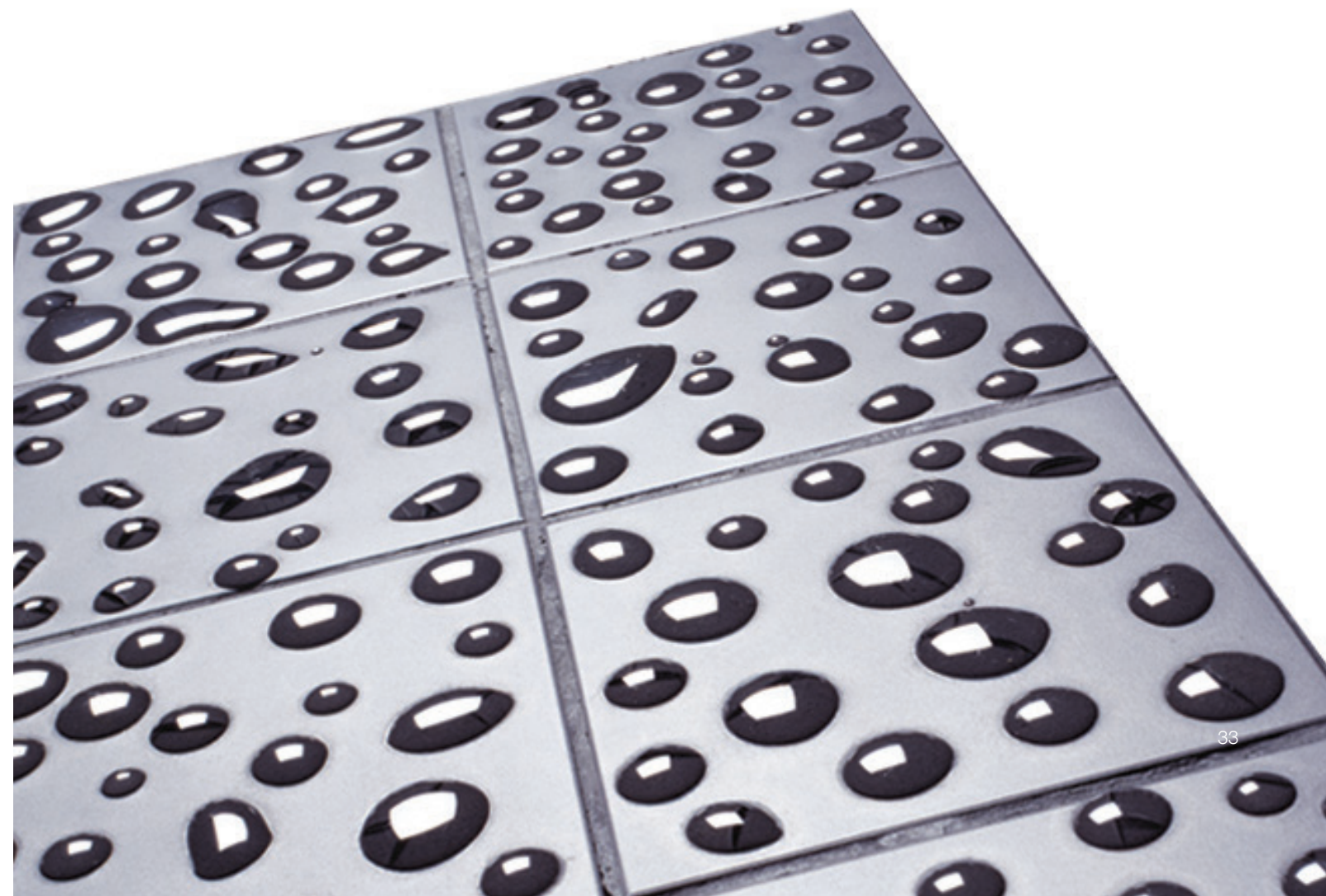
NEW

PRO-FLEX S2 / Highly flexible adhesive for ceramics C2TES2

Highly flexible adhesive for ceramics. Extremely flexible. Proflex S2 is a highly flexible, extremely strong adhesive, enriched with a special polymer. Adhesive intended for gluing wall and floor ceramic and stone tiles in outdoor and indoor conditions of exploitation, for laying ceramics on underfloor and wall heating. Intended for heavily loaded surfaces, gluing tile to tile, for rooms with a lot of moisture, swimming pools and the like. It is also used for gluing ceramic and stone tiles of larger dimensions up to 120x120 cm (approx. 14000 cm²). EN 12004-C2TES2 improved highly flexible cementitious adhesive with reduced slip and extended open time.

Consumption: ≈ 3-5 kg/m²

Packaging: Bags of 25 kg, 48 pcs, 1 pallet = 1200 kg



Adhesives for parquet flooring and wood



PVA-FIX / Adhesive for parquet flooring

Excellent adhesion on substrate. One-component adhesive made on the basis of polyvinyl acetate binders. Used for gluing classic and inlaid parquet to concrete and wood surfaces. Its properties include excellent adhesion to substrates and easy installation.

Consumption: $\approx 1,3 \text{ kg/m}^2$

Packaging: Containers of 1 kg, 12 pcs, 1 box = 12 kg
Containers of 5 kg, 60 pcs, 1 pallet = 300 kg
Containers of 25 kg, 24 pcs, 1 pallet = 600 kg



D3 / D-3 class adhesive for wood

Exceptional bonding power. Adhesive for wood made on the basis of polyvinyl acetate binders. Used for gluing elements when higher moisture resistance is required i.e. requirement of the D-3 group, EN 204. After drying, the adhesive is transparent, so that the bonded joints do not see. Its properties include exceptional bonding power.

Consumption: $\approx 150 - 180 \text{ g/m}^2$

Packaging: Tube 200g, 24 pcs = 1 box
Containers of 0.8 kg, 12 pcs, 1 box = 9.6 kg
Containers of 5 kg, 60 pcs, 1 pallet = 300 kg



Primers

Substrate preparation is very important in the system of protection and decoration of various surfaces. When choosing the appropriate impregnation, it is necessary to take into account the type and characteristics of the substrate, the requirements of the material for further processing just like the installation conditions.

Why a primer? It creates a strong bond between the old and the new material. / It reduces consumption of finishing materials. / It extends the pot life of the material. / It binds dust particles and poorly accepted parts. / It allows uniform water absorption. / It ensures a permanent bond between materials.



PODLOGA KONCENTRAT / Dispersive impregnation

Deep. Colourless. Basic colourless coating before application of façade and interior paints, skimming compounds, mineral and acrylic façade materials, construction adhesives. Penetrates deep into the substrate, evens it out and strengthens it. It creates a good bond between the old and the new material. It reduces consumption of finishing materials. It is diluted with water at a ratio of 1:3 (Podloga koncentrat: water).

Consumption: $1 \text{ l} \approx 10 - 15 \text{ m}^2$ depending on the substrate absorption and roughness

Packaging: Bottle 1 l, 12 pcs, 1 box = 12 l
Containers of 5l, 105 pcs, 1 pallet = 525 l



PODLOGA PRAKTIK / Acrylic dispersive impregnation

White or tinted. Principal primer of white colour, before application of latex paints, matt paints, façade paints, mineral and acrylic façades. It evens out and strengthens the substrate, creates a good bond between the old and the new material, reduces consumption of finishing materials, prolongs the pot life of the material. Available in a number of shades in the Colorit mix scheme.

Consumption: $1 \text{ kg} \approx 4 - 5 \text{ m}^2$, depending on the substrate absorption and roughness

Packaging: Containers of 1 kg, 12 pcs, 1 box = 12 kg
Containers of 5 kg, 60 pcs, 1 pallet = 300 kg
Containers of 20 kg, 24 pcs, 1 pallet = 480 kg



PODLOGA KVARC / Dispersive impregnation

Structural. Za glatke površine/beton - kontakt. This primer is used as a primer for smooth concrete surfaces before applying façade materials, and it is particularly suitable as a bonding bridge when new ceramic tiles are glued on the old ones. The application of this primer produces a relatively rough substrate (contains particles of the size of up to 700 microns) enabling a better-quality adhesion for material such as concrete paint, adhesive, façade and similar, better quality acceptance.

Consumption: $1 \text{ kg} \approx 4 - 5 \text{ m}^2$, depending on the substrate absorption and roughness

Packaging: Containers of 1 kg, 12 pcs, 1 box = 12 kg
Containers of 5 kg, 60 pcs, 1 pallet = 300 kg
Containers of 20 kg, 24 pcs, 1 pallet = 480 kg





PODLOGA UNIVERSAL / Dispersive impregnation

Structural. White. Covering. Basic primer in white, before applying mineral, acrylic, silicate, silicate-silicone and silicone facades and Granitplast. It evens out the substrate and strengthens it, creates a good connection between the old and new material, reduces the consumption of finishing materials, prolongs the processing time for facades. It contains particles up to 200 microns. It is available in a large number of shades in the Colorit mix system. Integral part of the thermal façade system COLORIT THERM EPS and COLORIT THERM MW according to ETAG 004 (ETA-17/0013 and ETA-17/0014).

Consumption: 1 kg ≈ 4 - 5 m², depending on the substrate absorption and roughness

Packaging: Containers of 1 kg, 12 pcs, 1 box = 12 kg
Containers of 5 kg, 60 pcs, 1 pallet = 300 kg
Containers of 20 kg, 24 pcs, 1 pallet = 480 kg



ALGOSTOP / Colourless biocidal agent for destroying wall algae and fungi

Ready to use. Colourless biocidal product, ready for use. It is used to destroy algae and fungi on wall surfaces in indoor and outdoor conditions of exploitation, before applying the top coat or facade. Dose recommended for use: 1 litre of product is enough to apply on 5 - 8 m² of affected area (dose depends on roughness, absorbency and contamination of the surface).

Consumption: 1 kg ≈ 5 - 8 m², depending on the substrate absorption and roughness

Packaging: Bottle of 0,5 l, 12 pcs 1 box = 6l
Container of 5 l



MIKROSIL / Silicone water-repellent impregnation

Strong hydrophobic properties. It is used for impregnation of substrates such as bricks, tiles, natural stone, concrete, etc. Mi krosil is made on the basis of silane and siloxane and as such has extremely hydrophobic properties (low water absorption). The substrate coated with MIKROSIL retains its natural appearance and significantly extends its shell life. It is colourless, retains the natural appearance of the material and does not affect vapour permeability.

Consumption: 1 l ≈ 1 - 4 m², depending on the substrate absorption and roughness

Packaging: Bottle 1 l, 15 pcs, 1 box = 15 l
Container 5 l, 105 pcs, 1 pallet = 525 l



PAINT FOR LOGS' ENDS / Protection

Elastic coating. Coating used for application on logs' ends, lumber and similar, serving to prevent or reduce wood cracking during drying. After drying, it forms an elastic film with good adhesion to wood.

Consumption: 1 kg ≈ 2.5 - 4 m², depending on the substrate absorption

Packaging: Containers of 20 kg, 24 pcs, 1 pallet = 480 kg



Lined writing area for notes or comments.

Wood stains



AQUAWOOD CLASSIC / Wood stain

Thin-film coating for wood protection and decoration in indoor and outdoor exploitation conditions. By penetrating wood it creates durable protection leaving the wood structure visible. Its properties include easy workability and high yield. Quick drying. Without unpleasant odours. Ecological paint – very low content of volatile organic compounds. Wash tools with water after use.

Consumption: 0.7l ≈ 7-10m² one layer, depending on the substrate absorption and roughness.

Packaging: Containers of 0.7l, 6 pcs, 1 box
Containers of 4l, 2 pcs, 1 box



**The colours that are shown are for reference only.
Due to printing-technical reasons, deviations from the original are possible.**

Colour card



AQUAWOOD WAX / Wood stain with wax

Thick-film coating for wood protection and decoration in indoor and outdoor exploitation conditions. The stain leaves visible the wood structure that gains a silky gloss. Its properties include easy workability and excellent resistance to external effects. Quick drying. Ecological paint – very low content of volatile organic compounds. Wash tools with water after use.

Consumption: 0.7l ≈ 7-10m² in one layer, depending on the substrate absorption and roughness

Packaging: Containers of 0.7l, 6 pcs, 1 box
Containers of 4l, 2 pcs, 1 box



AQUAWOOD PRIMER / Wood impregnation

In-depth protection of wood. Transparent micronized coating that penetrates deep into the wood. It also contains substances protecting wood against degradation. It is used for impregnation of wood joinery in indoor and outdoor exploitation conditions. The application of AQUAWOOD PRIMER produces a good-adhesion bridge between the wood and the next wood stain layer. Wash tools with water after use.

Consumption: 0.7 l = 6-10 m² in one layer, depending on the substrate absorption and roughness

Packaging: Containers of 0.7 l, 6 pieces, 1 box
Containers of 4 l, 2 pieces, 1 box



Portfolio

Public facility, Banja Luka



Residential building,
Banja Luka



Residential area,
Banja Luka



**Residential-commercial
building,** Banja Luka



Residential building,
Banja Luka



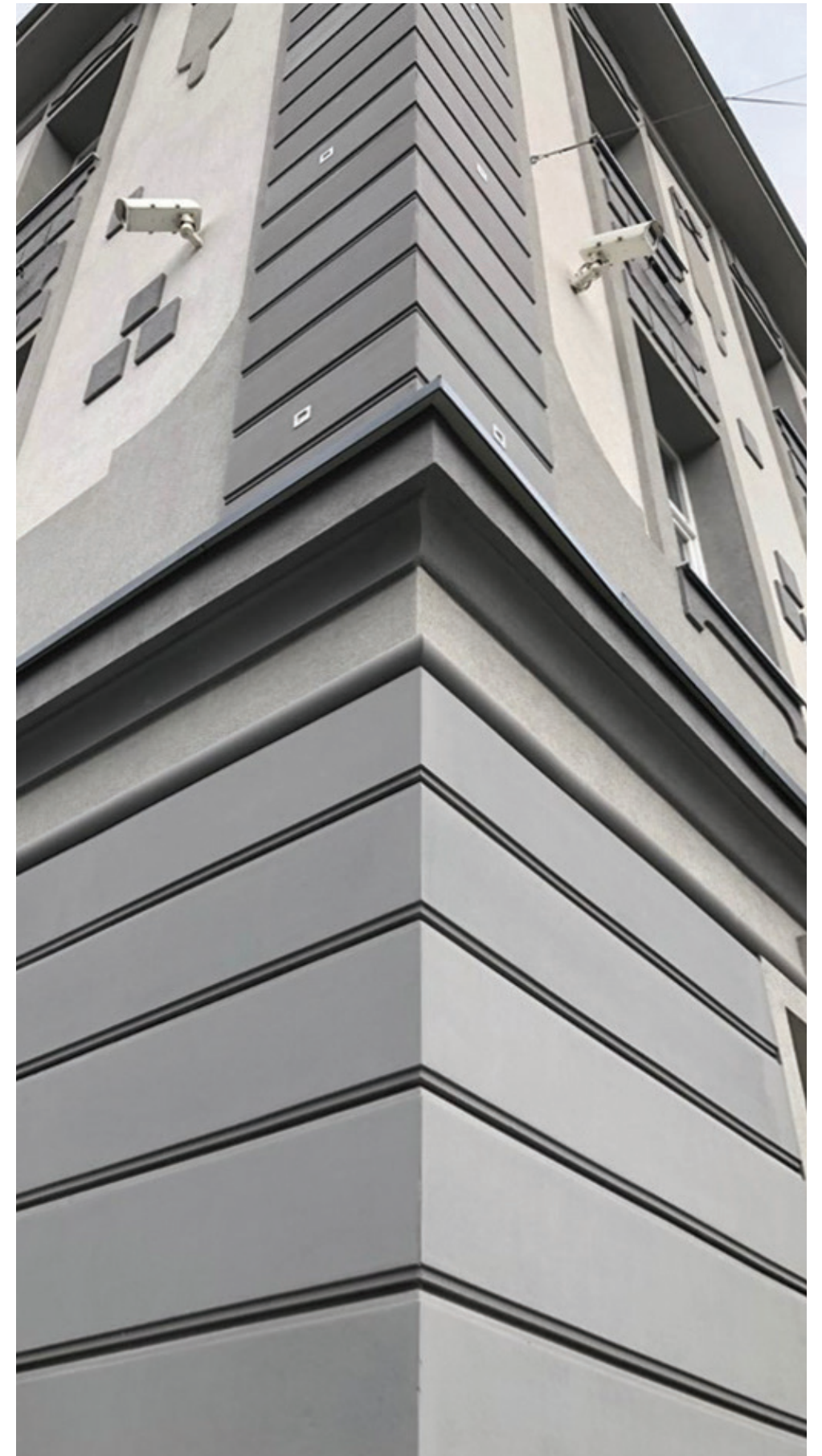
Residential house,
Banja Luka



Residential house, Venice



Public facility,
Kozarska Dubica





Residential-commercial building, Bijeljina



Residential building, Doboj



Residential-commercial building, Orašje

Residential house,
Banja Luka



Residential house, Bijeljina



Residential house,
Banja Luka



Residential house, Bijeljina



Public facility, Prijedor





Commercial building



Public passage, Banja Luka



Residential-commercial building, Trebinje



Residential building, Zvornik

Commercial building,
Banja Luka



Residential house, Slatina



Residential house,
Banja Luka



Residential area, Prijedor



Residential area, Prijedor





Residential building,
Banja Luka



Residential house,
Banja Luka



Residential house,
Banja Luka



Public institution,
Molerin Latex

General Terms and Conditions

The general conditions listed below regulate the relations between the seller, Colorit d.o.o, Banja Luka, Blagoja Parovića 114b, BiH and the customers. They apply to all orders, products and deliveries to all customers and business partners. Any other conditions are defined with the customer under an Agreement on Business Cooperation.

More detailed technical data that are not contained in catalogue 2021, Technical Data Sheet, Material Safety Data Sheet, Certificate, Approval, Warranty card can be found on our website www.coloritbl.com or requested by email: info@coloritbl.com.

PRODUCTION, ADMINISTRATION, WHOLESALÉ
TEL+387 51 388 820
FAX +387 51 388 801



Ordering goods

Customer orders are accepted exclusively in writing. For tinted materials, the order is irrevocable. When re-ordering tinted materials, shade deviations are possible and are not subject to complaint. It is necessary to equalize tinted materials of different batches, before use.

Delivery of goods

All orders received after 12:00 hrs will be processed the following day. Delivery of goods takes 2-7 working days. In case of force majeure (unfavourable weather conditions, traffic interruptions, state of emergency, etc.) or unforeseen circumstances (major defects, delays due to a third party), due to which there is a possibility that the goods will not be delivered within the specified deadline, Colorit is obliged to notify the business partner thereof, who has the right to cancel the order if no acceptable solutions are found.

Packaging of goods

Packaging of goods is done on reusable pallets. The pallets are not included in the price of the product. The debit / discharge reports for pallets are maintained automatically on the customer's invoices. The customer confirms with his/her signature the compliance of debit/discharge of the pallet. The price of the pallet is defined in the Agreement on Business Cooperation.

Storage

Due to poor storage conditions, all products can harden, get lumpy, contaminate and lose their technical characteristics. Store the products in a dry and dark place at temperatures from + 5C to +25 C. The product must not freeze or be exposed to direct sunlight.

Return of goods

The customer can return the goods only if there is a prior written agreement with the seller. If the CUSTOMER decides to return the goods due to their business policy, Colorit accepts the return of the goods, provided that the goods are in a technical proper condition, undamaged and with 2 (two) months to go before the expiry date. Tinted materials and Granitplast cannot be returned. It is not possible to return expired goods. It is not possible to return goods damaged due to poor storage conditions.

Complaints

Complaint regarding quantity: when taking over the goods, please record deviations and submit a specification of deviations in a written document. Complaint regarding quality: stop working immediately and inform the Colorit representative. Complaint will not be accepted without the invoice as a proof of origin of goods. Complaint will not be accepted if a product that is not from the same production batch (standard white materials, tinted materials and Granitplast) was used on the related surfaces. Complaint will not be accepted if the entire product that is the subject of complaint has been installed. Complaint will not be accepted if the products of other manufactures were combined or if technical information, instructions from both the manufacturer and the profession were not complied with. Colorit is not liable for damage caused by the installation of materials in weather conditions that are not in accordance with the instructions on the packaging.

Consumption

The specified consumption data are approximate. Deviations may occur depending on the absorbency of the substrate, the thickness of the coating or the substrate type.



Three horizontal lines at the top of the page, followed by a series of approximately 30 evenly spaced horizontal lines for writing.



Three horizontal lines at the top of the page, followed by a series of approximately 30 evenly spaced horizontal lines for writing.

