



COLORIT®

Palette of quality

COLORIT THERM SYSTEMS

THERMAL FACADE SYSTEMS AND ETICS SYSTEMS



COLORIT D.O.O. Blagoja Parovića 114b BANJA LUKA, BiH

PROIZVODNJA, UPRAVA, VELEPRODAJA:

tel. +387 51 388 820, fax: +387 51 388 801

e-mail: info@coloritbl.com

www.coloritbl.com

COLORIT THERM SYSTEMS

THERMAL FACADE SYSTEMS AND ETICS SYSTEMS

A house without a façade is not beautiful and is an eternal source of additional expenses. In addition to its aesthetic function, façade also provides thermal and sound insulation. Nowadays, one of the most frequent ways to satisfy the requirements of energy saving, sound and thermal insulation of exterior walls is the use of the related thermal insulation system -ETICS (External Thermal Insulation Composite System). ETICS is a façade system the components of which need to be manufactured in accordance with the applicable norms and standards. All components have to have a harmonized appearance and secure lasting protection.



QUALITY

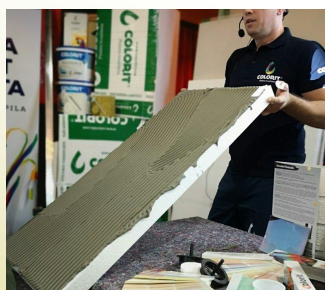


ETA certificate (the European Technical Approval)- is a certificate issued by the European Organization for Technical Approval. This certificate certifies that a thermal insulation system is compliant with all parameters prescribed by this organisation (mechanical strength and stability, safety in case of fire, hygiene, health and environmental sustainability, safe use, noise protection, energy efficiency and heat retention). ETA certificates for Colorit ETA-17/0013, ETA 17/0014.



WARRANTY

Supreme technical support for contractors, architects, vendors and investors is based on our technical knowledge, commitment and our responsible attitude towards work. With certified contractors and under the COLORIT THERM system to a multi-year warranty.

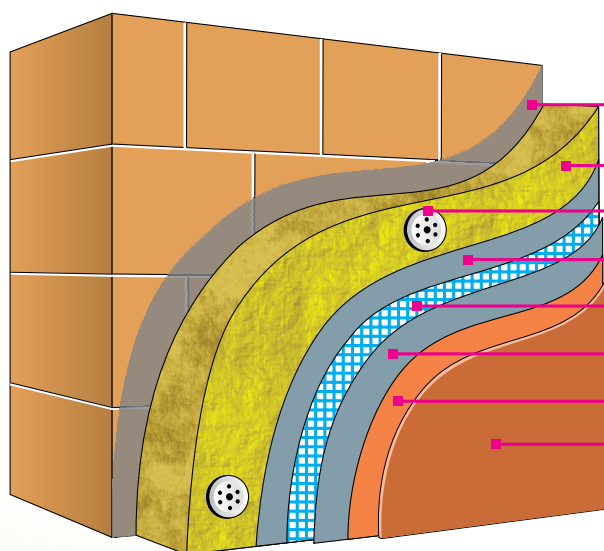


FACADE SYSTEM



COLORIT THERM MW Thermal Facade System with Mineral Wool

COLORIT THERM MW is thermal insulation façade system based on thermal insulation panels made of mineral wool, with a wide range of applications for both new and old buildings. It is suitable for repairs of old façades. It is applied for individual, through multi-dwelling up to commercial and storage units.



- Adhesive for thermal insulation (Unifix)
- Thermal insulation product (Mineral wool)
- Plastic anchor
- Base coat (Unifix)
- Reinforcing mesh 160g
- Base coat 2 (Unifix)
- Primer (Podloga universal)
- Finishing coat (Fassade akril, Fassade silikat, Fassade silikon)



CHARACTERISTICS:

- Reduced consumption of energy-generating products
- Reduced CO2 emissions
- High thermal protection
- Additional sound protection
- Mechanical protection and extension of service life of buildings
- Colorit Therm MW ensures additional safety in case of fire
- Healthy and comfortable microclimate